



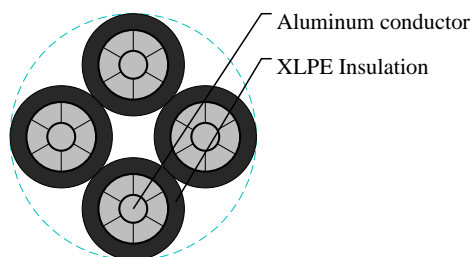
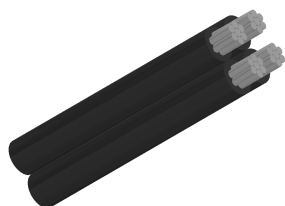
# Caledonian

Aluminium Conductor Cables

www.caledonian-cables.com

marketing@caledonian-cables.com

## 600/1000V ABC –Aerial Bundled Cables to BS 7870-5 (AL/XLPE) 4C25



### APPLICATIONS

The aerial bundled cables designed for overhead distribution lines have all conductors made of aluminium 1350 and insulated with XLPE. Phase and neutral cores are laid up in a bundle with a left hand lay. Can be used for fixed installation as overhead power lines up to 1000 V incl.

### STANDARDS

BS 7870-5:1999

### CABLE CONSTRUCTION

Conductor (for either phase, neutral or street lighting):The conductors shall be of aluminium 1350 wires and are compacted circular stranded(RM).

Insulation:XLPE. 1, 2 and 3 raised longitudinal ribs on the surface of the cores. The surface of the neutral core should have at least 12 ribs for cross-sections up to 50 mm<sup>2</sup> and a minimum of 16 ribs for cores above 50 mm<sup>2</sup>. In the case of five core bundles the surface of the protective core should be smooth.

Assembly:2 up to 4 cores of equal cross section are stranded together in left-hand lay, additionally 1 or 2 cores of reduced cross section can be co-stranded.

### PHYSICAL AND THERMAL PROPERTIES

Rated voltage:0.6/1 kV

Test voltage:4 Veff kV

Laying temperature:min. -20 °C

Operating temperature:-30 ~ +80 °C

Conductor temperature:max. +80 °C

Short-circuit temperature:max. +130 /5 °C/s

Bending radius (min.):18 × o of cable

### DIMENSION AND PARAMETERS

| No. of Cores<br>× Cross-<br>sectional Area | Approx. Overall<br>Diameter | Cable Weight | max. conductor<br>resistance | min. breaking<br>load of<br>conductor strand | Current rating<br>in the air |
|--|-----------------------------|--------------|------------------------------|--|------------------------------|
| No.×mm <sup>2</sup>                        | mm                          | kg/km        | Ω/km                         | kN   | A                            |
| 4x25 RM                                    | 21.2                        | 430          | 1.2                          | 4  | 107                          |